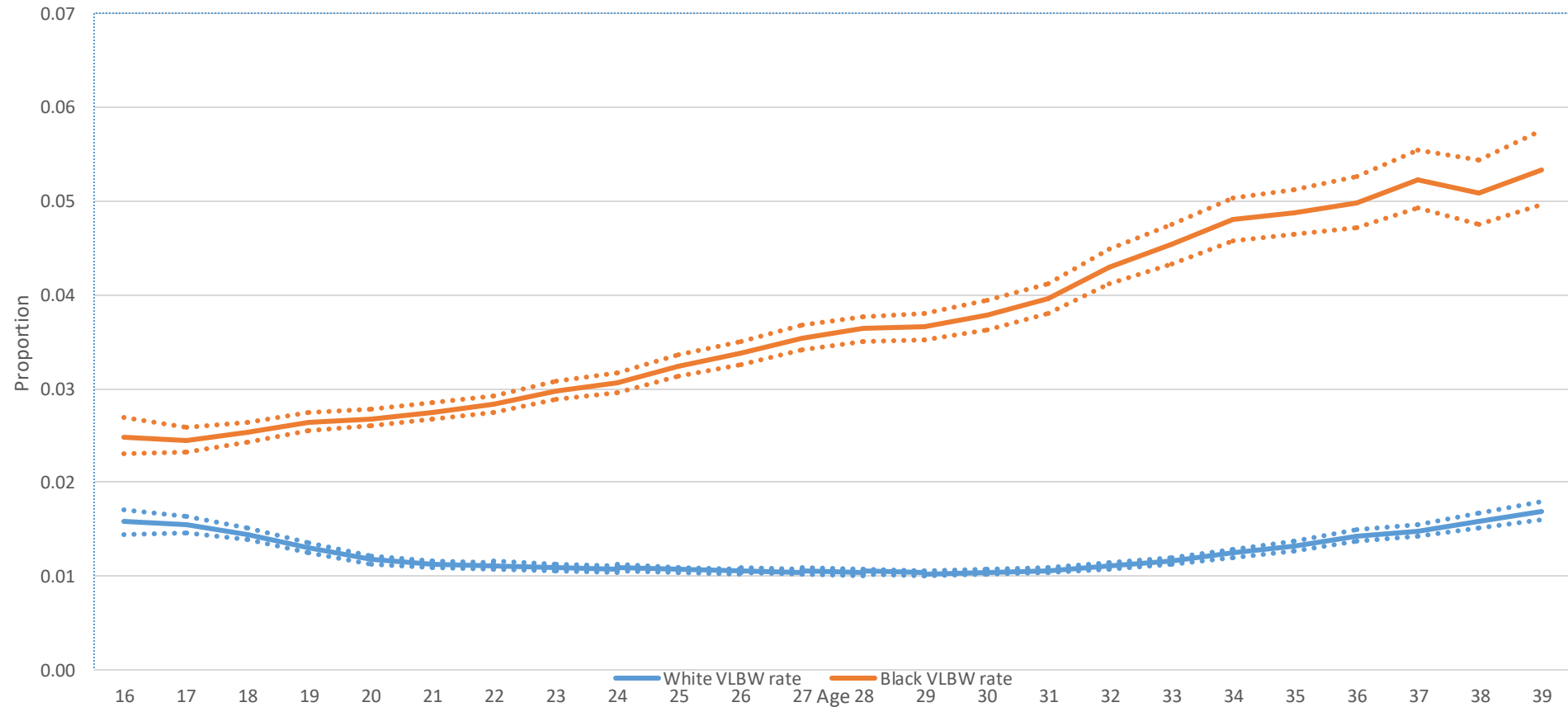


Dorothy Nortman “Parental Age as a Factor in Pregnancy Outcome.” Population Council, 1974

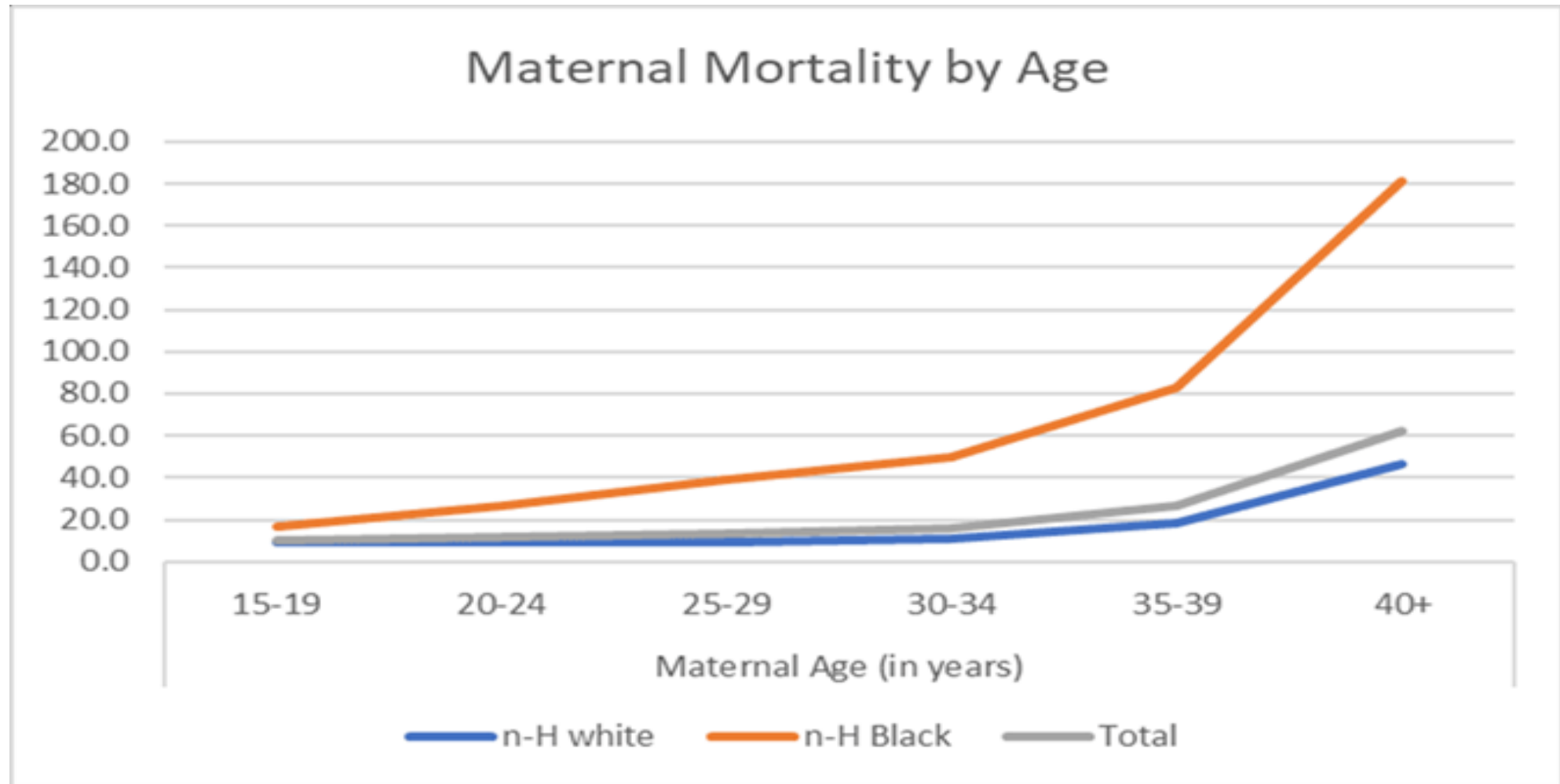
“Indeed it is common knowledge that...”

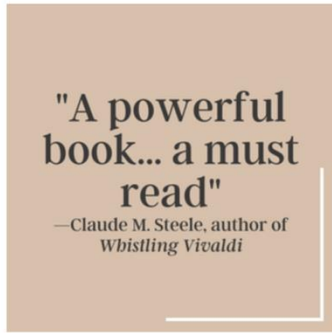
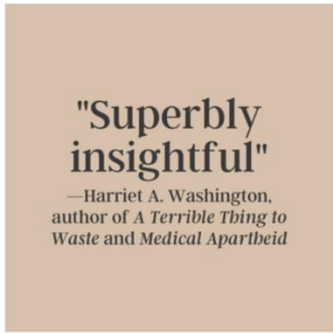
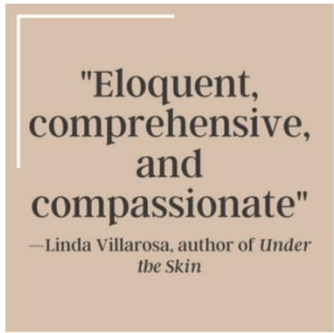
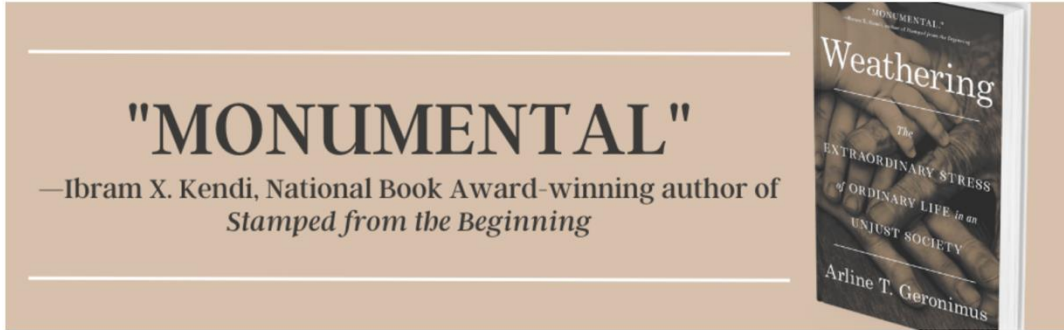
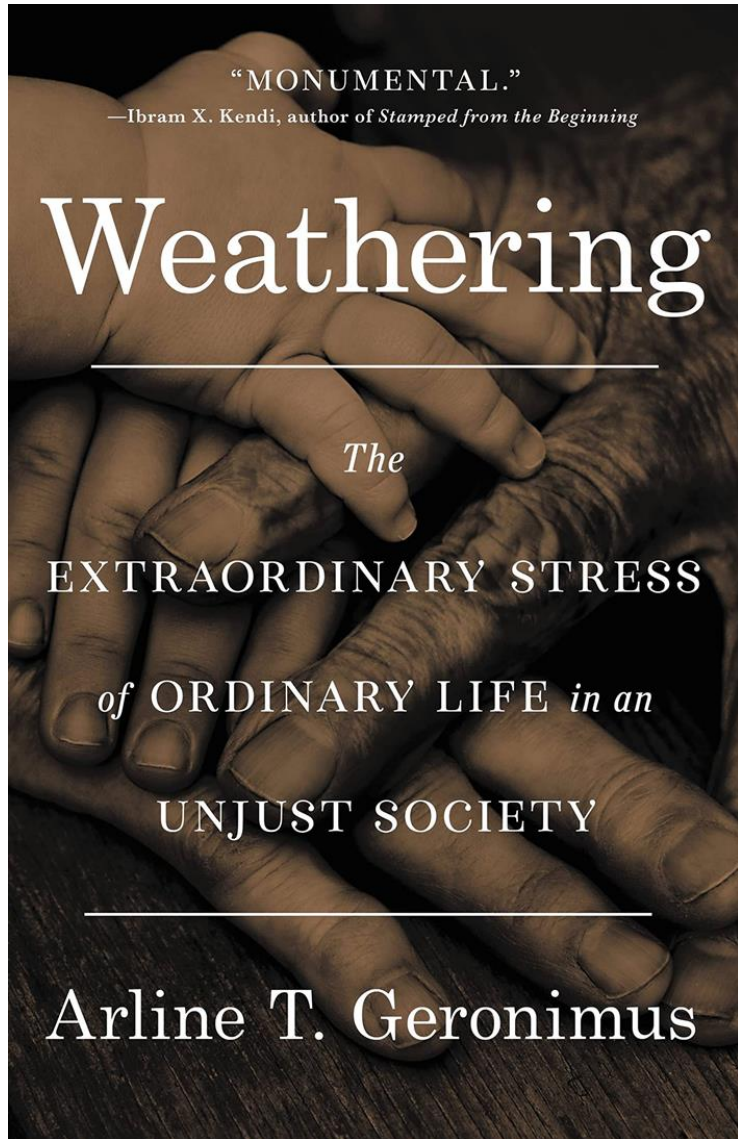
- there exists an optimal maternal age for reproductive outcomes. Departing from this optimal age—whether younger or older—increases the risk.
- Different types of reproductive risks exhibit specific patterns. These patterns often resemble U-, J-, or reverse J-shaped curves.
- **Biological vs. Social Factors: Universal developmental biological processes primarily determine age-related reproductive risk patterns, while social, cultural, and economic factors influence the degree of risk regardless of the mother’s age.**

Maternal age-specific rates of very low birthweight by maternal race, USA, 2017-19



Pregnancy-Associated Mortality Ratios and Maternal Age 2017-2019





ISR-SPH Training Program Alumni in academia

Jay Pearson



Duke University
Associate Professor

Danya Keene



Yale University
Associate Professor

Annie Ro



UC Irvine
Associate Professor

ISR-SPH Alumni In Academia

Linnea Evans



U Mass Amherst
Assistant Professor

Cynthia Colen



Ohio State University
Professor

Aresha Martinez-Cardoso



University of Chicago
Assistant Professor

ISR-SPH Alumni In Academia

Katrina Walsemann



University of Maryland
Endowed Chair

Javier Rodriguez



Claremont Graduate College
Associate Professor

Landon Hughes



Harvard University
Yerby Postdoctoral Fellow